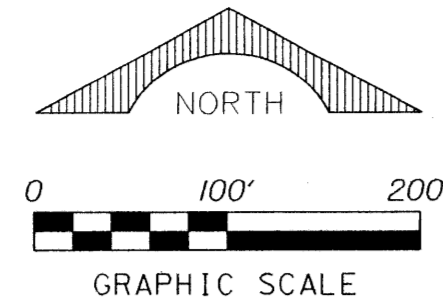


**PERIMETER**

**SURVEYING & MAPPING**  
 Prepared by: Jeff S. Hodapp, P.S.M.  
 Certificate of Authorization No. LB7264  
 951 Broken Sound Parkway, Suite 108  
 Boca Raton, Florida 33487  
 Tel: (561) 241-9888  
 Fax: (561) 241-5182

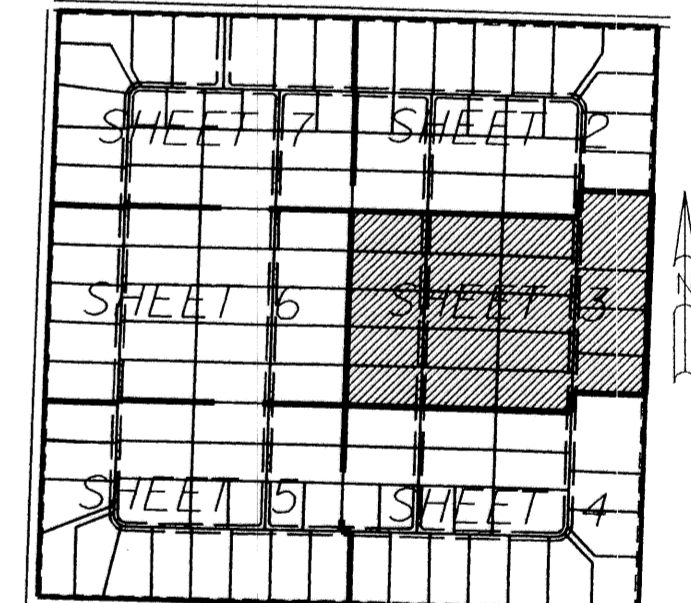


A PORTION OF THE ORANGE POINT P.U.D.  
**WELLINGTON PRESERVE**  
 A PORTION OF SECTION 34, TOWNSHIP 44 SOUTH, RANGE 41, EAST,  
 VILLAGE OF WELLINGTON, PALM BEACH COUNTY, FLORIDA.  
**DECEMBER 2003**

**SHEET 3 OF 7**



"HOMELAND"  
 (P.B. 33 PGS. 111-117)



**KEY MAP**  
 NOT TO SCALE

- LEGEND:**
- SET P.R.M. (UNLESS OTHERWISE NOTED) - ALUMINUM DISK IN 4"x4" CONC. MON. STAMPED +LB7264
  - P.C.P. CENTERLINE
- ABBREVIATIONS:**
- CH CHORD
  - CHB CHORD BEARING
  - CONC. CONCRETE
  - COR. CORNER
  - Δ DELTA (CENTRAL ANGLE)
  - D.B. DEED BOOK
  - D.E. DRAINAGE EASEMENT
  - L. LENGTH
  - L.B. LICENSED BUSINESS
  - L.M.E. LAKE MAINTENANCE EASEMENT
  - L.A.E. LAKE ACCESS EASEMENT
  - L.S. LICENSED SURVEYOR
  - MON. MONUMENT
  - O.R.B. OFFICIAL RECORDS BOOK
  - N.R. NON-RADIAL
  - P.B. PLAT BOOK
  - P.B.C.R. PALM BEACH COUNTY RECORDS
  - P.C. PAGE
  - P.C.P. PERMANENT CONTROL POINT
  - P.R.M. PERMANENT REFERENCE MONUMENT
  - P.S.M. PROFESSIONAL SURVEYOR & MAPPER
  - P.U.D. PLANNED UNIT DEVELOPMENT
  - R. RADIUS
  - R/W. RIGHT-OF-WAY
  - SEC. SECTION
  - S.F. SQUARE FEET
  - U.E. UTILITY EASEMENT